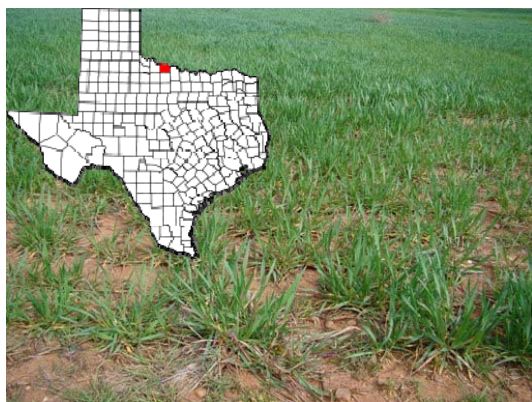


Wheat Rusts in Texas (Update: March 15, 2010)

Last week I did some traveling around the state, from Amarillo (NW Texas) and SE through Ft. Worth, and south through Waco, College Station, south of Austin, around the San Antonio area, and back to Amarillo.

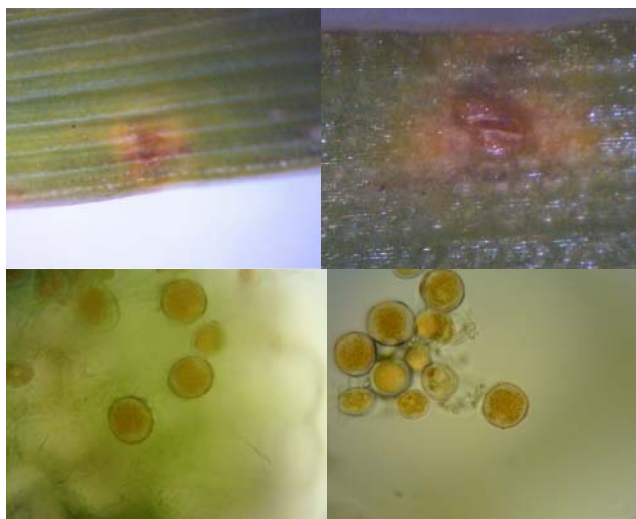
Wheat leaf rust was found at trace levels five miles west of Wichita Falls. This location is in Wichita County, and 120 miles NW of Fort Worth. Other close but more southern locations had leaf rust as well, but at trace levels too.



Wheat observed was at Feekes 5-6. This location is approximately 15 miles south of the Oklahoma border, and south of Grandfield, OK. No stripe rust was observed. Few pustules were observed.



However, newly or almost erumpent uredia could be observed breaking through the tissue.



As indicated by previous reports coming out from Texas during the past 6 weeks, wheat leaf rust was present in the Lower Rio Grande Valley (LRGV) but now it has gone from trace to moderate and heavy levels. Leaf rust was recently reported from College Station, Castroville, Abilene, Brady, and as far north as Amarillo as indicated by recent reports from Rex Herrington and Jackie Rudd. Stripe rust has been observed as far north as Abilene.

The wheat in the LRGV is fully headed and harvest will take place within a month's time. Still, no reports of stem rust.

I did see trace levels of leaf rust around San Marcos (Hays County, south of Austin), but powdery mildew was more prevalent, although at low levels, from this area through Bexar county, which has San Antonio as the county seat.

Northern Texas will have some showers and will be warming up as temperatures are expected to be as high as 72°F (22°C) in Wichita Falls, Ft. Worth, and Dallas later this week, as high as 74°F (23°C) in Vernon, and in the high 60s during the day in Amarillo later this week.