

PLPA-WM002-2008

## WATERMELON TRANSPLANT DISEASES: BACTERIAL FRUIT BLOTCH

Bacterial fruit blotch is a seedborne disease caused by the bacterium, *Acidovorax avenae* subsp. *citrulli*. A few contaminated seeds can lead to widespread contamination in transplant facilities that use overhead watering.



**Fig. 1. Initial watersoaking between veins, on the underside of the cotyledon.**

The symptoms on leaves will first appear in an area of plants surrounding an infected seedling.



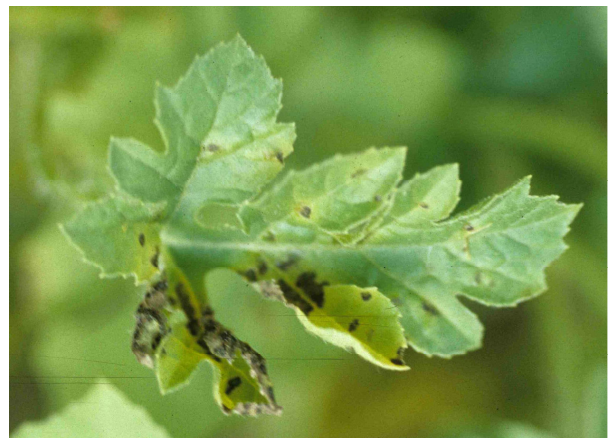
**Fig. 2. Later, the watersoaked area dries and dies.**



**Fig. 3. Symptom on a honeydew cotyledon.**



**Fig. 4. Symptoms on leaves, indicating movement by splashing water: circular spots or irregularly-shaped spots around veins.**



**Fig. 5. Extensively-colonized areas die.**

The initial watersoaking between veins of the cotyledons, as well as the irregularly-shaped spots on the leaves are unique for this disease. Other symptoms such as cotyledon death and circular spots may resemble disease caused by other pathogens.

Text and Photos by Dr. Thomas Isakeit, Professor and Extension Plant Pathologist  
April, 2008

The information given herein is for educational purposes only. References to commercial products or trade names are made with the understanding that no discrimination is intended and no endorsement by Texas AgriLife Extension Service personnel is implied.  
Educational programs of the Texas AgriLife Extension Service are open to all people without regard to race, color, sex, disability, religion, age, or irrational origin.  
The Texas A&M University System, U.S. Department of Agriculture, and the County Commissioners Courts of Texas Cooperating