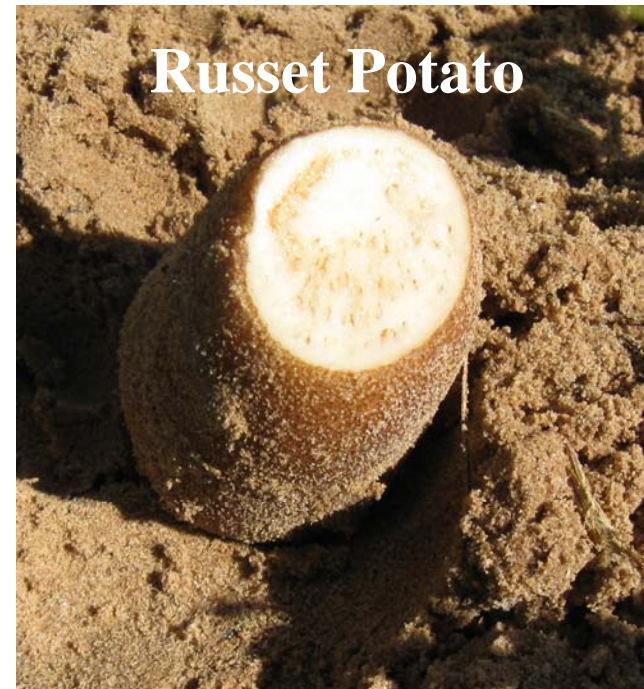
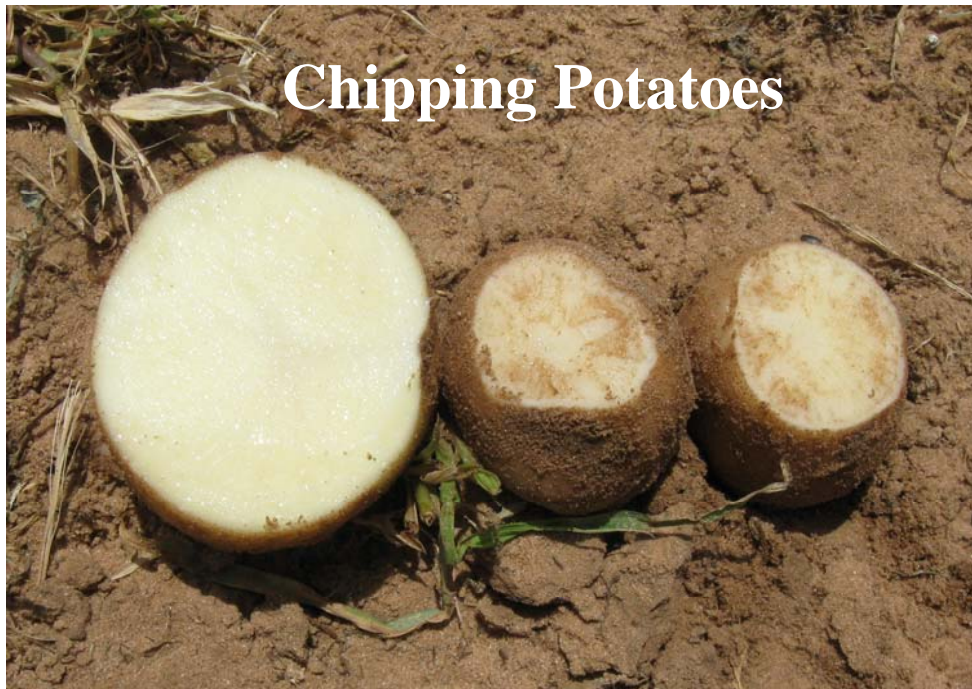


Zebra Chip of Potato: A New Threat to US Potato Production



Zebra Chip of Potato

- **Zebra Chip was first identified in Texas but has now been reported in California, Colorado, Kansas, Nebraska, New Mexico and Wyoming**
- **The disease affects all market classes**
- **It reduces both yield and quality**



Zebra Chip of Potato

- ZC may be caused by a bacteria called *Candidatus Liberibacter* - **but this has not been scientifically verified!**
- The potato psyllid has been demonstrated to be the vector – **control has been difficult!**
- Most ZC-affected seed do not sprout but some do – **Epidemiological impact unknown!**



Specialty Crop Research Initiative: An Approach to Healthy Production



ZC Specialty Crop Research Initiative

Management Of Zebra Chip To Enhance Profitability And Sustainability Of US Potato Production

- *New project with a team of 20 multidisciplinary researchers and extension specialists, and an Advisory Board of Stakeholders.*
- *Team members come from six State Universities and USDA-ARS*
- *Scientists represent six states: California, Idaho, Nebraska, North Dakota, Texas and Washington.*

Project Goal: Reduce losses from ZC to economically sustainable levels by development of a comprehensive, environmentally responsible disease management program

ZC Specialty Crop Research Initiative

Seven Priority Focus Areas:

1)Detection, Vector/Pathogen Diversity and Disease Etiology

2)Epidemiology

3)Pest Management

4)Breeding

5)Economics

6)Risk Assessment/Disease Forecasting

7)Technology Transfer

Each Priority Focus area will be supported by a series of specific objectives

ZC Specialty Crop Research Initiative

At least six anticipated *Deliverables* from the Project:

- 1) Best management practices (BMP)**
- 2) A ZC risk assessment/disease forecasting model**
- 3) Germplasm with demonstrated tolerance to ZC**
- 4) Economic models with cost/benefit analyses and best-case/worst-case scenarios**
- 5) Extension publications, demonstration trials, educational and training programs dealing with all aspects of ZC**
- 6) Scientific data that will be useful to regulatory agencies in development of Pest Risk Assessments for ZC.**

ZC Specialty Crop Research Initiative

- The ZC SCRI project is planned for five years.
- We are requesting approximately \$6M from CSREES.
- A 1:1 match of cash or in-kind support is required.

If unsuccessful in securing this grant, continuation of existing research on ZC is jeopardized!

