

Five Steps to Healthy Roses

1. Plant roses in full sun.
2. Use drip irrigation or soaker hoses.
3. Water in early morning.
4. Selectively prune to open canopy and increase air circulation.
5. Manage weeds and insects to prevent the spread of viruses.



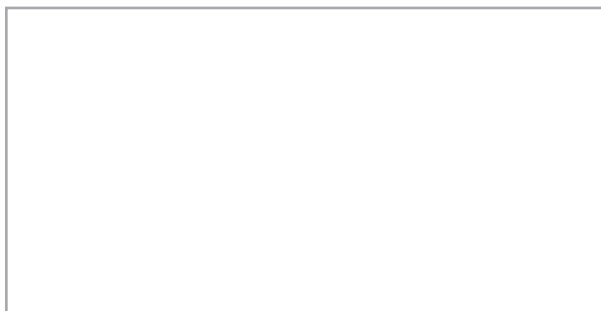
Janell Stevens Johnk
Assistant Professor and Extension Plant Pathologist
The Texas A&M University System

Educational programs of the Texas Agricultural Extension Service are open to all people without regard to race, color, sex, disability, religion, age or national origin.

Issued in furtherance of Cooperative Extension Work in Agriculture and Home Economics, Acts of Congress of May 8, 1914, as amended, and June 30, 1914, in cooperation with the United States Department of Agriculture. Edward A. Hiler, Interim Director, Texas Agricultural Extension Service, The Texas A&M University System.

5,000 copies, Revised

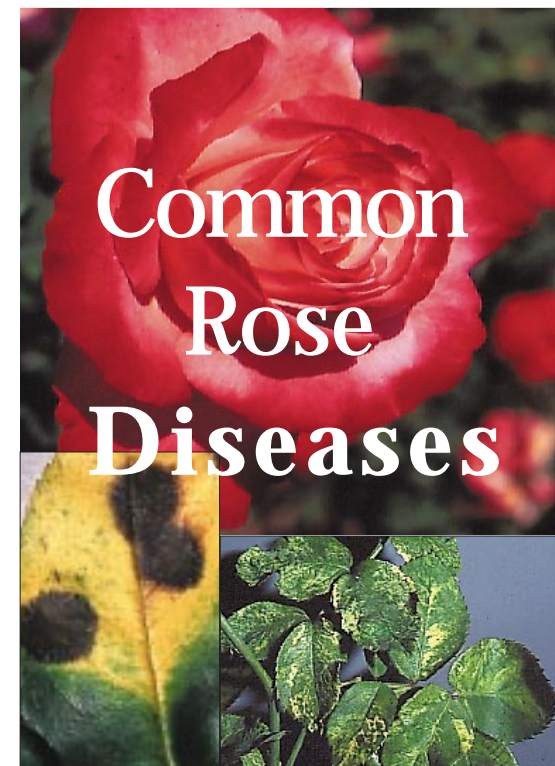
PP



The information given herein is for educational purposes only. Reference to commercial products or companies is made with the understanding that no discrimination is intended, and no endorsement by the Cooperative Extension Service is implied.



L-5172
3-98



Texas Agricultural Extension Service
The Texas A&M University System

Black Spot

Rose varieties differ in their susceptibility to black spot fungus. While many newer varieties were screened for disease resistance, some older varieties and antique roses are also somewhat resistant. However, many hybrid tea roses are susceptible.



Symptoms

Affected leaves have black spots with fringed edges. Leaves may turn yellow. Severe infections cause leaves to drop prematurely. Repeated defoliation stresses the plant, making it more susceptible to insect problems and other diseases.

Management

•Prune damaged or infected canes.
The black spot fungus over winters on canes. Careful pruning removes damaged or infected canes and slows disease development.



•Keep leaves dry.

The fungus requires leaf wetness to cause infection. So keep leaves dry by:

- Planting roses in full sun.
- Using drip irrigation or soaker hoses.
- Watering in the early morning.

•Apply fungicides.

Susceptible roses will need fungicide applications during times of favorable environmental conditions. During spring and fall, when rains are more frequent and cool temperatures form dew, many roses - even those with some resistance - will probably need to be sprayed.

Powdery Mildew

Powdery mildew is also caused by a fungus. While black spot is a problem in the spring and fall, powdery mildew can be a problem spring, summer and fall.

Symptoms

Whitish patches appear on infected leaves. The leaves may pucker in some varieties.



Management

Powdery mildew fungus doesn't need leaf wetness to cause infection, but it does need high humidity at the leaf surface.

Reduce the humidity by:

- Planting roses in full sun.
- Watering in early morning.
- Selective pruning to open the canopy and increase air circulation.

Fungicide application may be necessary for susceptible rose varieties.

Viruses

Viruses are often spread by insects such as leaf hoppers, or through graft unions. *There is no chemical for virus control.*

Symptoms

Leaves are mottled yellow and green. Leaves may be crinkled, puckered or distorted. Symptoms are easiest to see on new leaves.



Management

Remove infected plants because they are the source of the virus for insects to spread to other roses. Weed control is important because weeds can serve as a reservoir for the virus and a home to insect vectors.